

# TRICO STEEL SYNDICATE

COMPANY PROFILE

## Content:

Company Founder.....	04
About Us.....	05
Vision and Values.....	06
Strengths.....	07
Servicing Quality.....	08
GI Perforated Cable Tray.....	10
<b>Type of cable Tray Cover.....</b>	<b>11</b>
<b>Hotdip Galvanised Cable Tray.....</b>	<b>12</b>
<b>SS Perforated Cable Tray.....</b>	<b>13</b>
All type of Perforated Tray Bend.....	14
Ladder type Cable Tray.....	15
Layout of Ladder type Cable Tray.....	16
All type of Ladder Tray Bend.....	17
Layout of Bends.....	18-19
Raceways with Cover.....	20
Raceway.....	21
Junction Box.....	22
Layout of Raceway / Junction Box.....	23
Slotted Angle.....	24

C Channel.....25  
SS C Channel.....26  
Solar Walkway.....27-30  
Work Experience.....31  
Our Esteemed Clients.....32-34  
Infrastructure.....35

# Company Founder



**Rajeev Bhatia**

## About Us

M/S. Rico Steel Syndicate is a leading Manufacturing firm in India. Since its inception in 1998, the firm has been providing SLOTTED SECTIONS of various sizes, viz-a-viz; Cable-Tray and related cable support systems and accessories.

Our products are used throughout India for every conceivable cable routing and distribution application.

We are committed to continuously innovate and use the latest manufacturing methods along with high quality raw material to offer our customers products that are uncompromising in terms of quality, adaptability and functionality to serve our customers in a better way.

We take pride in our Quality & Commitment to Deliver, offer a Competitive Price and Cost effective products to our distinguished buyers, which has led us on for many years in this Competitive Industry.

We look forward to your continued patronage and a mutually beneficial association with our distinguished organization.

We present you with our catalogue of products and experience, and shall be extremely grateful if you could enlist us as one of your potential suppliers.

## **Vision and Values**

Our goal is not merely to be one of the most successful companies in the sector, but to be the most preferred partner-of-choice. To be distinguished as the most trusted: by the people we work with, as well as the people we work for our soul is a set of abiding values which translate in our actions:

**Agility:** We perform with speed and suppleness.

**Team Spirit:** Celebrating the power of 'We'.

**Learning:** Individually, collectively and constantly.

**Meritocracy:** Nourishing capability and performance.

**Community:** A positive impact on the world.

## **Strategy**

### **Core Values**

- Performance Driven
- Innovation
- Integrity
- Excellence
- Customer Focus
- Mutual Respect

## **Intrinsic Strengths**

- Speedy response to clients' requirements
- Active support to clients
- Relationship driven
- High corporate governance standards

## **Client Delight**

Satisfaction is fundamental to enhancing customer loyalty and business opportunities. We have experienced increased business activities over the last few years and have scaled up our business processes and operations.

## **Servicing Quality**

For over twelve years, RICO has pioneered new ideas to meet the divergent needs of customers with efficient storage and Materials Handling Solutions.

We offer the most comprehensive range of products available, all especially designed for easy-to-use and to enable you to fully utilize your space.

Since, quality is of paramount importance for us we make sure that the end products match the exact technical specifications as per the client's requirements. To ensure quality, we conduct stringent quality checks at each and every stage of production right from the raw material stage till the final dispatch of products.

It shall be our endeavor to continually improve the quality of our services and products to match the best and latest in the industry.



## Product Range

We have a variety of products to save your vital cable network from corrosion, seepage & destructions.

Available in different dimensions & combination to suit to specific requirements.

## CABLE TRAYS

Cable trays are being used internationally for power distribution as they offer economical wire management

solutions for a variety of indoor and outdoor applications.

They are Painted or Galvanized as per the requirement. GI is fabricated from GI Sheet, Galvanising from 65 to 75 MICRONS as per IS:2629.

### Perforated Type Cable Trays Available in:

- MS Type Perforated Cable Tray
- MS Painted Perforated Cable Trays
- Powder Coated Perforated Cable Trays
- GI/GP Type Perforated Cable Trays.



# GI Perforated Cable Tray



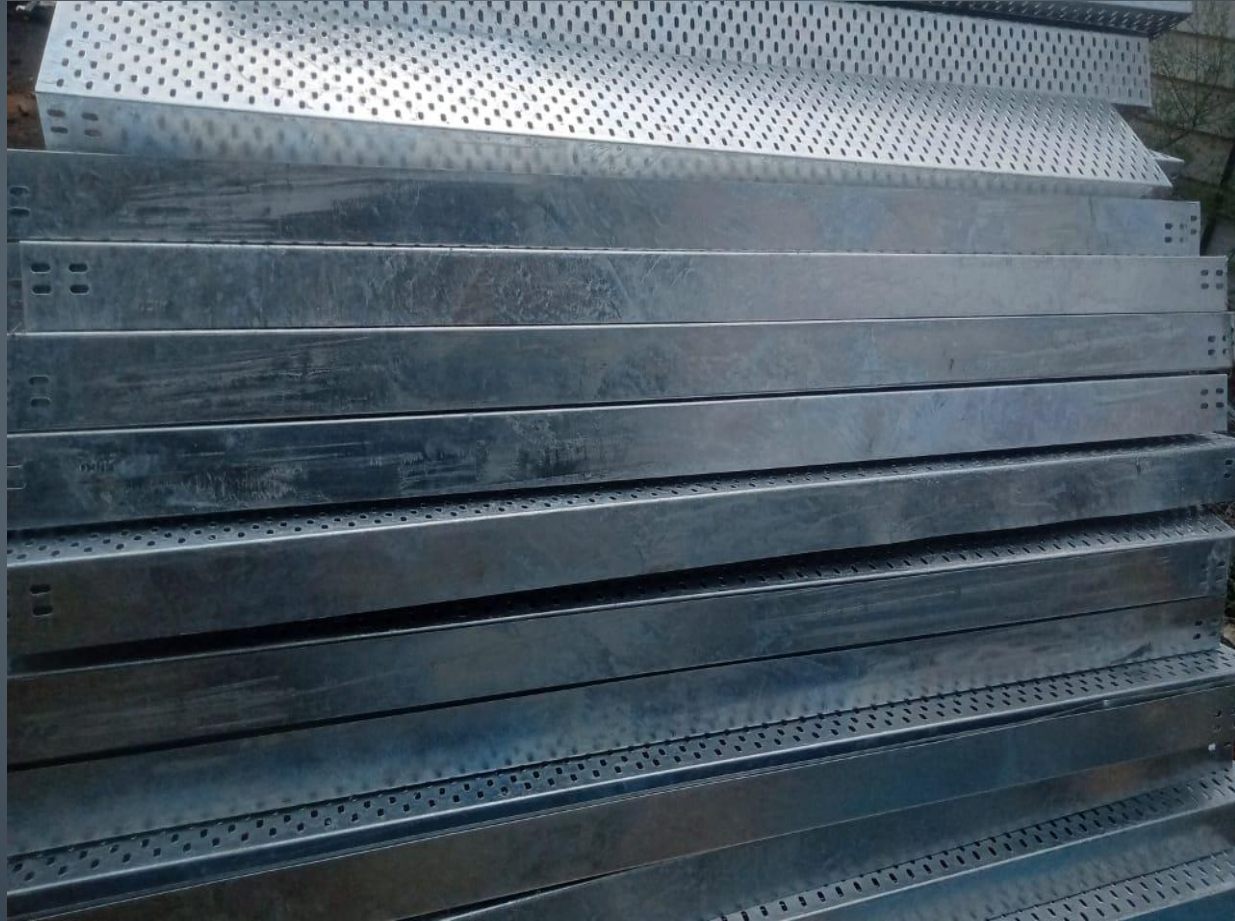
# Type of Cable Tray Cover



Walkway



# Hotdip Galvanised Cable Tray



# SS Perforated Cable Tray

# All Type of Perforated Tray Bend



**Horizontal Bend**



**Reducer**



**Vertical Bend**



**Cross**



**Tee**

## LADDER TYPE CABLE TRAY

Its shape is like an ordinary ladder, having two sides and between these two sides; steps are placed, called

RUNGS. The two sides are un-perforated U channels, called RUNNERS.

Runner's standard length is 2.5 meter and it is generally fabricated from 2mm or 1.6 mm M.S sheet. The

center width of the runner may be 50 mm to 150mm and the height of the edge is generally kept 25 mm.

Rungs are of perforated type and their length depends on the width of the LTCT.

### Ladder Type Perforated Cable Trays Available In:

- MS Ladder Type Perforated Cable Trays.
- MS Painted Ladder Type Perforated Cable Trays.
- Powder Coated Ladder Type Perforated Cable Trays.
- GI/GP Ladder Type Perforated Cable Trays.



# Layout of Ladder Type Cable Tray





# All Type Of Ladder Tray Bend



**Horizontal Bend**



**Vertical Bend Inside**



**Vertical Bend Outside**



**Center Reducer**



**Right Hand Reducer**



**Left Hand Reducer**

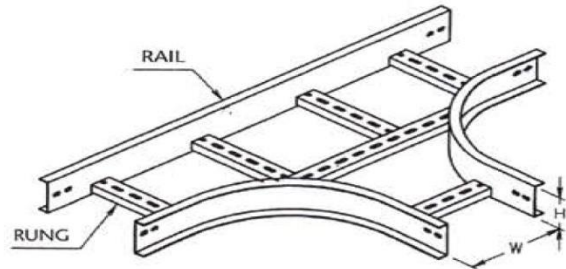


**Tee**

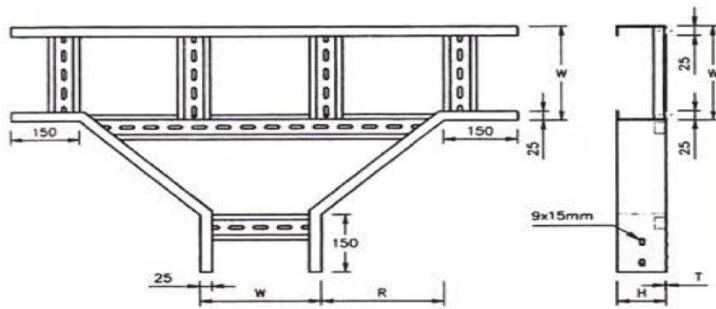


**Cross**

## 90 DEG HORIZONTAL EQUAL TEE



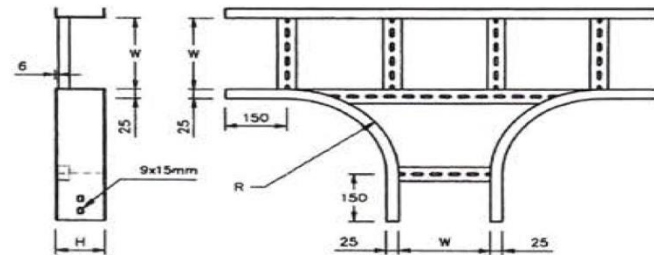
### 90 DEG HORIZONTAL EQUAL TEE KNOCK DOWN (SCREW TYPE)



FRONT VIEW

SIDE VIEW

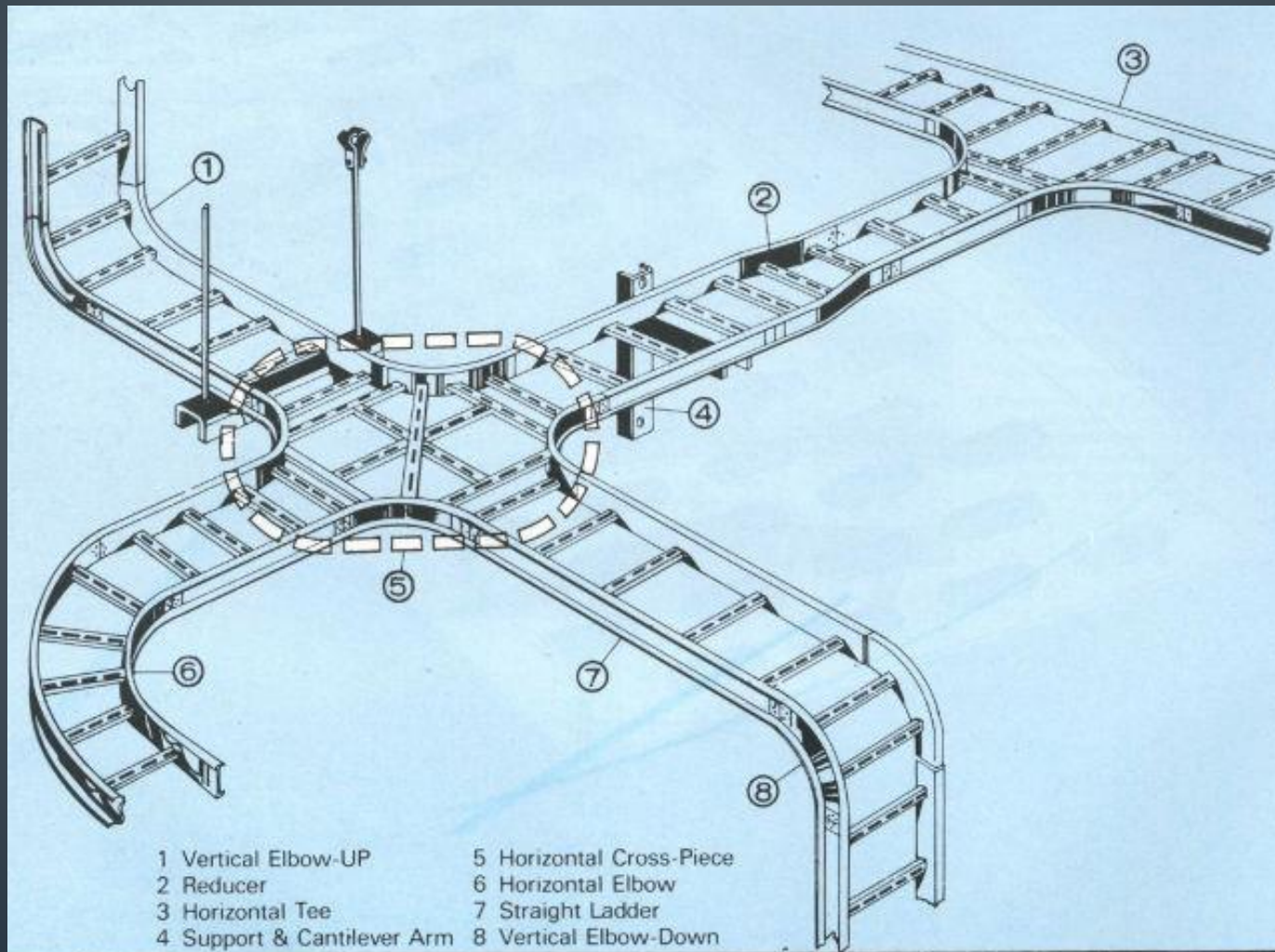
### 90 DEG HORIZONTAL EQUAL TEE OUTSIDE RAIL (WELDING TYPE)



SIDE VIEW

PLAN VIEW

# Layout Of Bends



## RACEWAYS WITH COVER

Raceways used for laying underground cables. These are without centre perforation. Cover is an essential part of Raceways. It may be a plain or a bended one, as per the requirement.

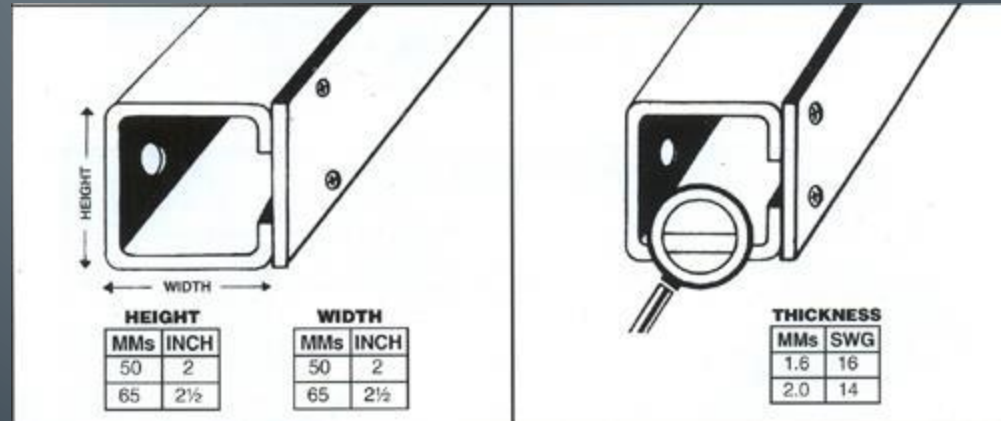
The cover is screwed at several places with the inside 15 mm lip. It may be fabricated from 2 mm or 3 mm M.S sheet.

Raceways are widely used in IT industries to carry networking cables.

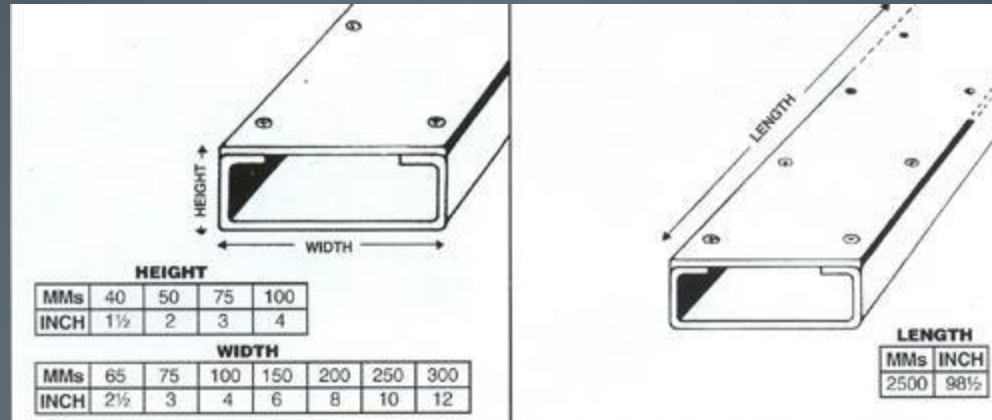
### Raceways are Available in:

- Pre Galvanized Sheet
- M.S. Sheet / CRCA
- Painted & Powder Coated

## WE USE DIFFERENT TYPES OF SCREWS FOR A BETTER PRODUCT



# Raceway



## DIFFERENT TYPE OF SCREWS



Phillip Head  
unpointed  
Screw



Pan/Round Head  
unpointed  
Screws

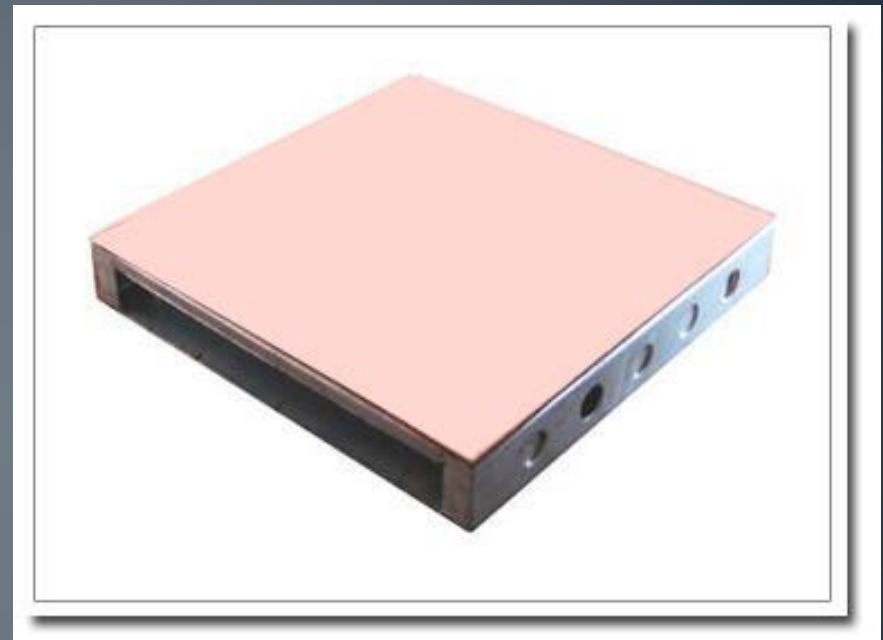


Phillip Head  
Countersink  
unpointed Screws

# JUNCTION BOX



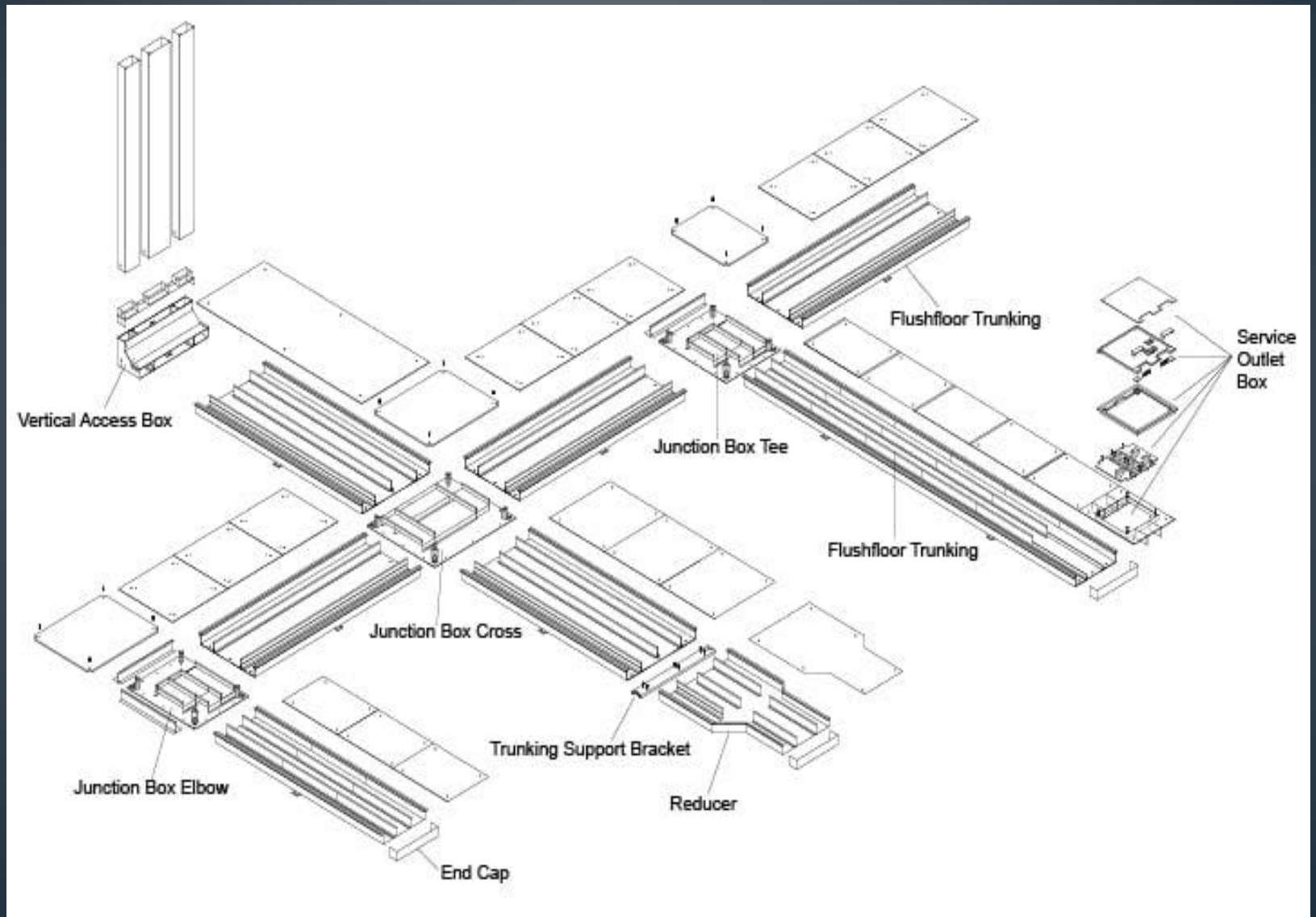
**POWDER COATED**



**STAINLESS STEEL COVER**

Mostly used by Multinational Companies, Foreign Banks and Airline Offices etc. Usually lay under the floor, fixed on ceilings. Electrical/ Telecom/Computer Cables/ Wires lay inside the raceways.

# Layout of Raceway



# SLOTTED ANGLES





# GI C Channel



# SS C Channel

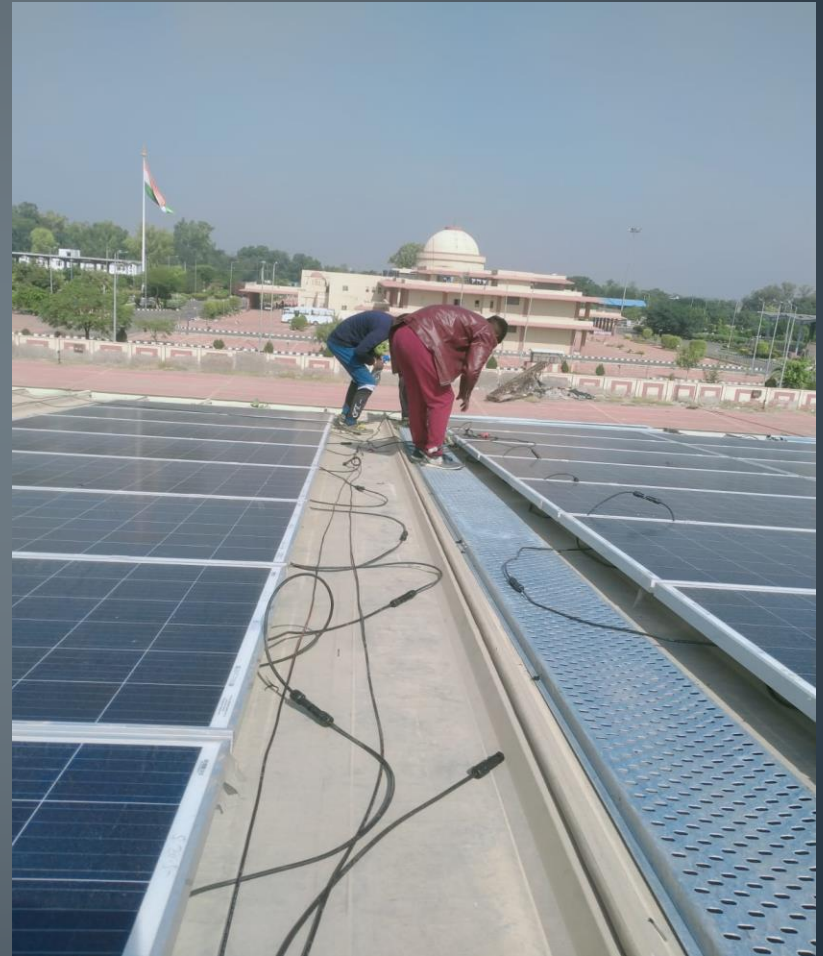
# Walkway



# Walkway



# Walkway



# Walkway



# Work Experience

A Partial List of our record of Supply of work done, during the last three years for Cable Trays C Channels Slotted angles Walkway and Raceways Only.

## Client Approximate Value of work done

M/s AHLUWALIA CONTRACTORS PVT. LTD 70.00 Lacs

M/s ABB LTD. 57.00 Lacs

M/s POWER & INSTRUMENTATION PVT. LTD. 68.00 Lacs

M/s BHARAT ELECTRICALS. 54.00 Lacs

M/s SUDHIR 72.00 Lacs

M/s JAZZCON 41.00 Lacs

M/s JACKSON 49.00 Lacs

M/s STERLING & WILSON ELECTRICALS LTD. 88.00 Lacs

M/s BLUE STAR LTD. 46.00 Lacs

M/s AARGEE CONTRACTS PVT. LTD. 42.00 Lacs

M/s VOLTAS LTD. 53.00 Lacs

M/s MEC ELECTRIC CONTRACTS PVT. LTD. 57.00 Lacs

M/s SUDHIR ENGINEERING. 58 Lacs

## **Our Esteemed Clients**

OUR CLIENTELE CONSISTS OF MANY BLUE CHIP COMPANIES OF THE COUNTRY.  
SOME OF MULTI – NATIONAL ORGANISATIONS, EMBASSIES, PRIVATE & PUBLIC  
UNDERTAKINGS ETC.

### **TO NAME A FEW**

M/s AHLUWALIA CONTRACTORS PVT. LTD.  
M/s AUMNSHI GLOBAL INDIA PVT. LTD.  
M/s AMBER ELECTRONICS.  
M/s ABB LTD.  
M/s BHARAT ELECTRICALS.  
M/s BLUE STAR PVT. LTD.  
M/s CADENCE ELECTRICALS ENGINEERS PVT. LTD.  
M/s DATS INDIA LTD.  
M/s EMS ELECTRICAL.  
M/s ESCORTS GROUP OF INDUSTRIES.  
M/s ETA ENGINEERING LTD.  
M/s G. SQUARE.  
M/s GMP TECHNICAL SOLUTION PVT. LTD.  
M/S.GRAMS ELECTRICAL  
M/s HONDA SIEL CARS INDIA LTD.  
M/s HERO HONDA MOTORS LTD.  
M/s INDIAN OIL CORPORATION LTD.  
M/s INFONET NETWORK SYSTEMS (I) PVT. LTD.



M/s INDIAN OIL CORPORATION LTD.  
M/s INFONET NETWORK SYSTEMS (I) PVT. LTD.  
M/s JAZZCON.  
M/s JUBILANT ORGANSYS LTD.  
M/s LLOYD INSULATIONS LTD.  
M/s LITURA ELECTRICAL TECHNOLOGIES PVT. LTD.  
M/s MILESTONES ENGINEERING (P) LTD.  
M/s LLOYD INSULATIONS LTD.  
M/s LITURA ELECTRICAL TECHNOLOGIES PVT. LTD.  
M/s MILESTONES ENGINEERING (P) LTD.  
M/s MCML SYSYSTEMS PVT. LTD.  
M/s MEC ELECTRIC CONTRACTS PVT. LTD.  
M/s NAVSURYA SYSTEMS PVT. LTD.  
M/s PARNIKA COMMERCIAL & ESTATE PVT. LTD.  
M/s PANUN ENTRACON.  
M/s POWER & INSTRUMENTATION PVT. LTD.  
M/s ROTO POWER.  
M/s REFLEXIONS INDIA PVT. LTD.

M/s SERVOTECH ELECTRICALS PVT. LTD.  
M/s STERLING & WILSON ELECTRICALS LTD.  
M/s SUDHIR ENGINEERING.  
M/s SREX POWER  
M/s. S.L. ELECTROMECH PVT. LTD.  
M/s S. K. ELECTRICALS  
M/s TRIPLE A ENGINEERING PVT. LTD.  
M/s TRACE ELECTRICALS.  
M/s TANEJA VIDYUT CONTROL PVT. LTD.  
M/s UNITED ENGINEERS  
M/s VISTAR CONSTRUCTIONS.  
M/s VIVA GLOBAL.  
M/s VOLTAS LTD.  
M/s VARDaan CONTRACTS P. LTD.  
M/s VARISCON ENGG.SERVICES PVT. LTD.

AND MANY MORE.....

# Infrastructure

## **You can contact us at:**

1/121 CSP Tower DLF Moti Nagar , New Delhi-110005

+91-9811110906, 01147038977

Email: [ricosteelsyndicate@gmail.com](mailto:ricosteelsyndicate@gmail.com)

Our organization has a workforce with strength of around 35 members with representatives all over to ensure a better market presence of our services.

Our infrastructure is well equipped with requisite tools and measuring equipment to execute various kinds of Projects.